



جامعة الإمام عبد الرحمن بن فيصل  
IMAM ABDULRAHMAN BIN FAISAL UNIVERSITY

مدن ومجتمعات  
محلية مستدامة



SDG 11

# Sustainable Cities & Communities

Sustainable  
Development Report

2022-2023



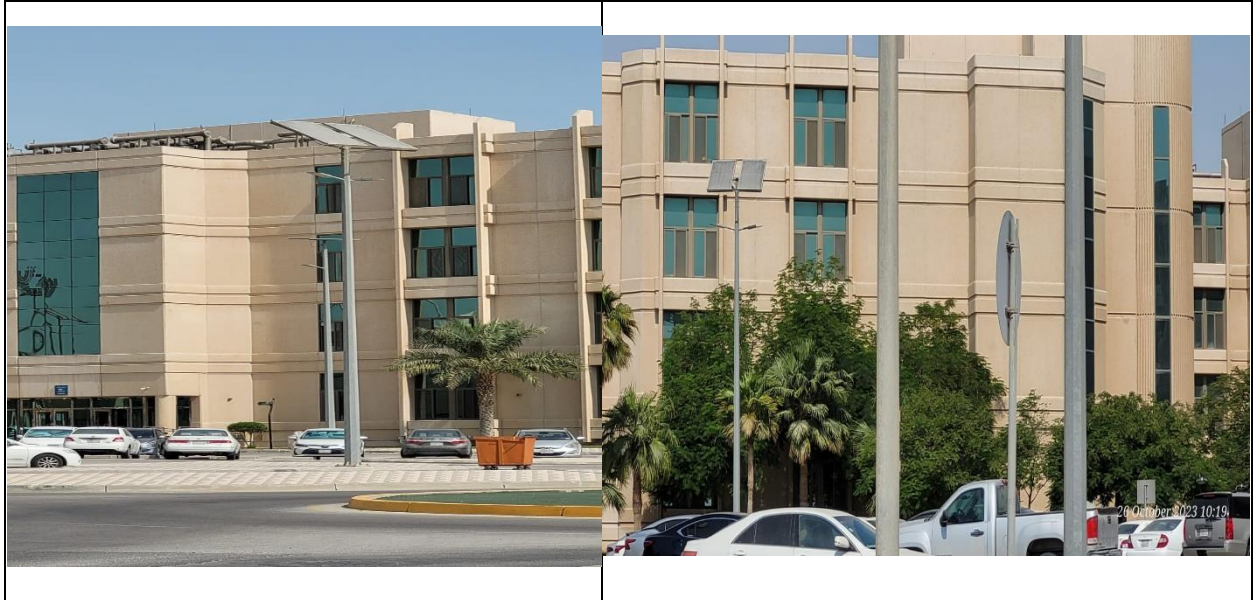
## Table of Contents

1.	Solar panels usage in IAU.....	3
2.	Waste management system of the university.....	5
3.	Systematic Water Recycling process.....	6
4.	Sustainable Transportation at IAU.....	7
5.	Saudi National day.....	9
.6	Sustainable commuting.....	10
7.	Housing.....	12



## 1. Solar panels usage in IAU

Sustainable measures taken across the campus by installing Solar panels to reduce the electricity consumption thereby promoting less carbon foot print.





**Solar Panels spread at IAU Campuses**



**Solar Panels installed all over the campus to provide energy for the purposes of lighting, heating, cooling, running university laboratories, etc**

## 2. Waste management system of the university

Sustainability city needs to handle the waste in a wise manner. At Imam Abdulrahman Bin Faisal University (IAU) the waste are segregated by careful scanning either for reuse or for safe disposal.



**Collection of Organic and Inorganic Waste for treatment**



**"Modeem"- Collecting and Reusing students' excess stationery and materials and offering them to those who need it.**



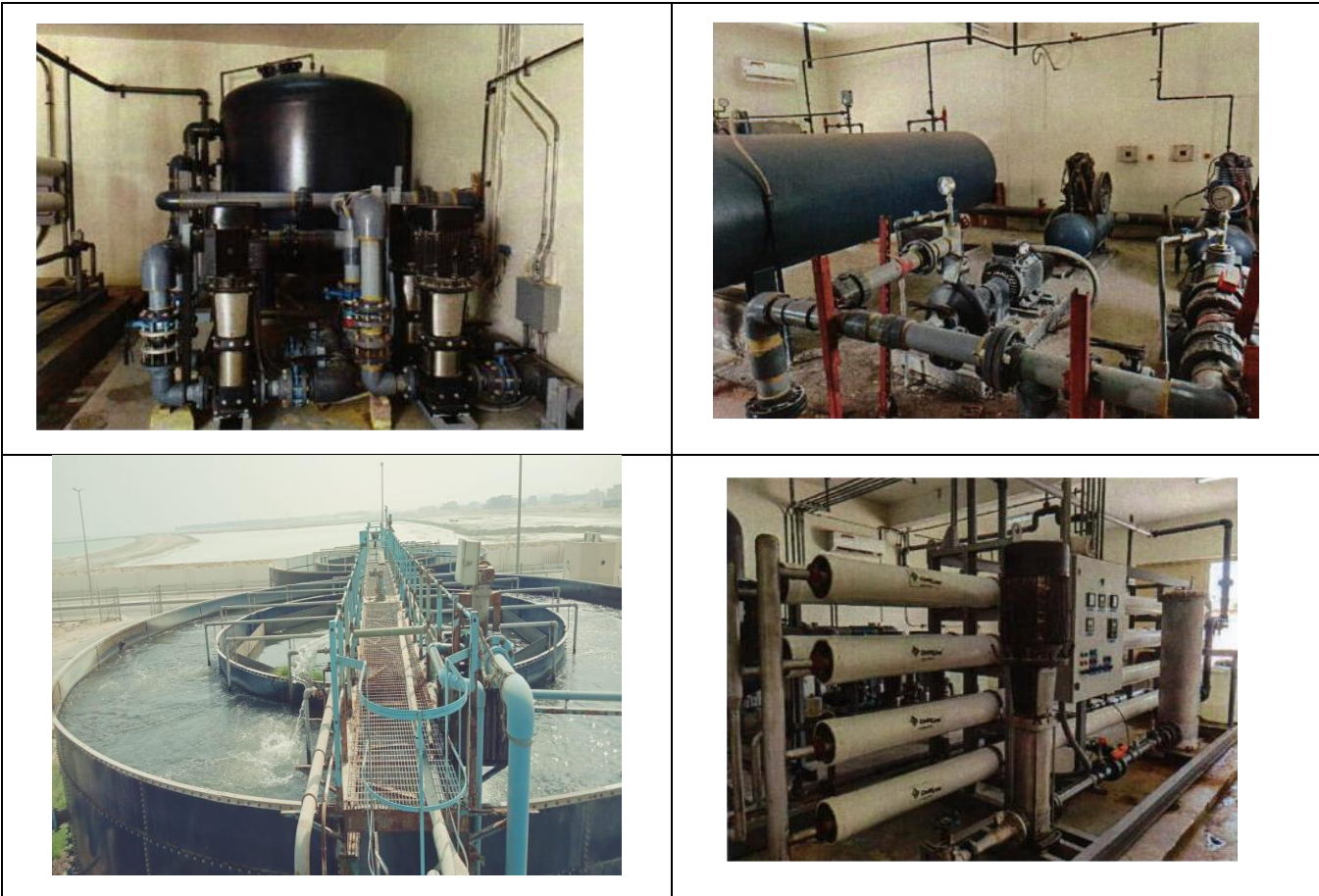
**Recycling materials including reusing used Laptops collection campaign**



**Different Outdoor Color Bins used for Waste segregated as Paper, Plastic and Cans in IAU**

### 3. Systematic Water Recycling process

At IAU, Water is recycled and consumed without polluting the mother nature.



Water treatment plant at IAU



Recycled water used for gardens



Treated water is consumed in all Washrooms

#### 4. Sustainable Transportation at IAU

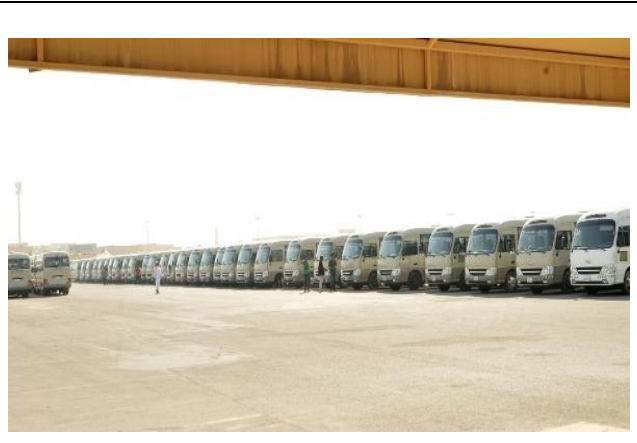
Introduction of Shuttles and E-bikes greatly reduced the carbon footprint emitted from the vehicles. IAU is concerned about the



Environmental health and promotes the staff and students to use Shuttle services instead of coming to the University in personal vehicles.



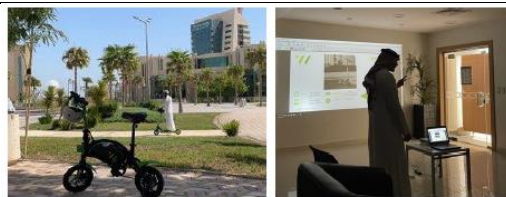
**Shuttle service**



**Fleet of Shuttles**



**Introduction of E-Bikes**



**Usage of E-Bikes**



## 5. Saudi National day



IAU Celebrates its heritage; Saudi National day is commemorated in a grand manner at IAU Campuses which is welcomed by the public to make it a majestic success.

## 6. Sustainable commuting



Club Car (E-cart) available for Commutation inside IAU



**E-Scooter Initiative at IAU**



**E-Scooters for faculty, students and staff**

### SHUTTLE OPTION 1

Motors: 2x 1000W (Front & Rear)  
 Battery: 48V 100Ah  
 Power: 1000W  
 Speed: 25km/h  
 Range: 100km  
 Weight: 1500kg  
 Max. Load: 1500kg

**MotoEV Electro Transit Buddy 15 Passenger LE Hard Door Shuttle**



### SHUTTLE OPTION 2

**Marsheil DN-14C Series 14-Seater Enclosed Electric Resort Car**

**Features**

- 1. The vehicle is an electric vehicle with a range of 100km.
- 2. The vehicle is an electric vehicle with a range of 100km.
- 3. The vehicle is an electric vehicle with a range of 100km.
- 4. The vehicle is an electric vehicle with a range of 100km.
- 5. The vehicle is an electric vehicle with a range of 100km.
- 6. The vehicle is an electric vehicle with a range of 100km.
- 7. The vehicle is an electric vehicle with a range of 100km.

Performance	Electrical	Mechanical
Max. Speed: 25km/h	Power: 1000W	Max. Load: 1500kg
Max. Range: 100km	Battery: 48V 100Ah	Max. Speed: 25km/h
Max. Load: 1500kg	Weight: 1500kg	Max. Range: 100km
Max. Range: 100km	Max. Load: 1500kg	Max. Speed: 25km/h

**Average price: 22,995\$**



**2- Electric and affordable shuttle buses**



## 7. Housing



### Registration for Student Housing

Housing Registration Form (Male)	
Housing Registration Form (Female)	
Student Housing Regulations	
Rules of Student Housing	
Rules of Student Housing (Female)	
Student Housing Schedule (Male)	
Student Housing Schedule (Female)	

About Student Housing

Services provided by the Student Housing Department

<https://www.iau.edu.sa/en/administration/deanships/deanship-of-student-affairs/services/student-housing>

