



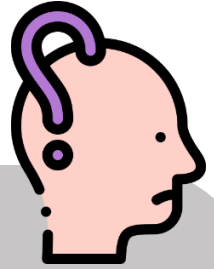
جامعة الإمام عبد الرحمن بن فيصل
IMAM ABDULRAHMAN BIN FAISAL UNIVERSITY

مستشفى الملك فهد الجامعي
King Fahad Hospital The University

Alzheimer's



What is Alzheimer's?



Alzheimer's is a brain disorder in which the cells are damaged slowly, which causes some behavioural, cognitive, thinking and memory issues and this would have a negative impact on people lives. The causes of Alzheimer's disease are uncertain, but the accumulation of (tau) protein (amyloid) in the brain causes damage to brain cells and thus Alzheimer's disease

What are Alzheimer's risk factors?

➤ Genetic and hereditary causes



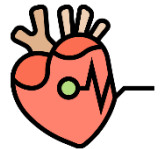
➤ Females are most affected



➤ aging



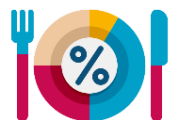
➤ Factors that increase the risk of heart disease



➤ Lack of mental and physical activity



➤ Diet



What are the symptoms of Alzheimer's?



First: the early stage

At this stage, the person with Alzheimer's disease experiences difficulties in remembering, especially remembering recent events and the names of people and places he recently visited, as well as facing some difficulties in doing some simple mathematical operations, and such symptoms may cause some inconvenience.

What are the symptoms of Alzheimer's?



Second: middle stage

At this stage, symptoms become clear and more dangerous, then the patient or his relatives refer to the doctor to find out the reason, and at this stage the patient becomes unable to perform simple functions such as brushing hair, brushing teeth, managing money, driving a car, choosing clothes and other functions of daily life, and he cannot live alone without problems, speech becomes more difficult and it becomes a lot of aimless wandering, symptoms of hallucinations and false beliefs appear, and the old memory may not be affected clearly.

What are the symptoms of Alzheimer's?



Third: the late stage

At this stage, some important mental functions such as understanding, thinking, speaking, reading, writing and other mental functions become difficult. At this stage, it is difficult for the patient to eat food, get to know those around him, understand events as well as the ability to find his way inside the house, in addition to walking difficulties and behaving inappropriately in society.

How is Alzheimer's treated?



Currently, no definitive cure for Alzheimer's disease, and medications depend on slowing the deterioration of the patient's condition

Sources and references:

All images used are from flaticon.com and Freepik.com

Review and audit:

The content of this booklet has been reviewed by
consultant of Psychiatry Department at King Fahd
University Hospital

Health Awareness Unit

IAU-20-62



جامعة الإمام عبد الرحمن بن فيصل
IMAM ABDULRAHMAN BIN FAISAL UNIVERSITY

مستشفى الملك فهد الجامعي
King Fahad Hospital The University