



جامعة الإمام عبد الرحمن بن فيصل
IMAM ABDULRAHMAN BIN FAISAL UNIVERSITY



SDG 7.2.3 Carbon
reduction and
emission reduction
2022-2023

Table of Contents

1. Green University without Carbon.....	3
2. Zero Emission Vehicles (ZEV) Policy on Campus to promote Carbon Free Campus.....	4
3. IAU BUS SERVICE (To reduce private vehicle’s carbon emissions) ...	7
4. IAU-C1 SHUTTLE BUS SERVICE - Electric Busses	8
4.1.	8
4.2.	8
5. IAU-C1 BIKING SERVICE - Electric Bikes.....	8
6. Program to Limit carbon reduction.....	9
1. Shuttle/bus campus inside campus	9
2. E-Scooter also launched to reduce the parking area in the campus	10
7. Pedestrian paths (To control/limit commuting inside campus in vehicles to reduce carbon emissions).....	11

1. Green University without Carbon

In order to integrate with the national efforts for sustainable development and as an extension for the pioneering initiatives in this field, as (Green Saudi Initiative) and (Green Middle East Initiative), Imam Abdulrahman bin Faisal University launched (Green University without Carbon Initiative) aiming to plant thousands of seedlings and trees with participation of IAU employees and students in Campaigns for mass afforestation in the university areas over Dammam, Khobar, Qatif and Jubail, to reduce carbon emissions, as the first initiative of its kind at the level of universities in the Kingdom, to consolidate the concept of sustainability inside campuses at the level of the local community.

The initiative was launched in cooperation with the branch of the Ministry of Environment, Water and Agriculture in the Eastern Region and the “Nabatak” platform for digital afforestation on several campaigns with the aim of achieving sustainable development goals along with national and university targets in this field, and as contributing to increasing the green area, reducing harmful environmental pollutants, and employing sustainable environmental techniques to improve the public image of the university beside educating the community about the importance of environmental protection and maintenance to reduce environmental and economic damages where 6 campaigns were implemented so far, with participation of more than 550 volunteers, during which 7,529 seedlings and trees were planted including Neem, Poinciana, Indian Jasmine, Tamarisk, Ghaf Khaleeji, and Ficus.



<https://www.iau.edu.sa/en/news/afforestation-initiative-led-by-iau>

2. Zero Emission Vehicles (ZEV) Policy on Campus to promote Carbon Free Campus



Dr. Al-Rubaish said that the university launched the pilot phase of the smart mobility service to achieve the Kingdom's Vision 2030 towards providing new opportunities for transportation. "This initiative is achieved through generating clean energy within the university campus by bicycles and e-scooters with the WAYZ application, which will facilitate for its users the rapid mobility feature at the university through an electronic mobile application," he added. This novel experiment is based on using clean energy for mobility inside the university campus.

IAU launched the initiative of 'Green University without Carbon,' under which these scooters, which are charged and operated with solar energy, will be used. It is a service available to all educational and administrative staffers of the university and to male and female students.

Dr. Fatima, Dean of the Deanship of Community Service and Sustainable Development, mentioned that the goal is to be sustainable through the presence of solar-powered stations. It is the beginning of an experimental start, and work is continuing to equip stations to charge these devices powered by solar energy.

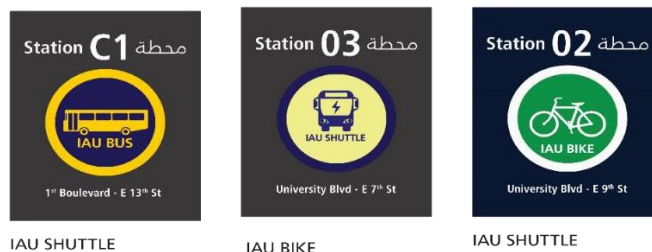
This initiative will facilitate their freedom of movement without cars, and the initiative received much encouragement

Moreover, demand," she said while noting that safe corridors have been provided inside the university campus.

This is one of our priorities to ensure the safety of the beneficiaries of this service, and it will be included in the first stage inside the university campus until the infrastructure and private roads are provided at the university for this type of initiative that is reflected in reducing the proportion of carbon.

2- Electric and affordable shuttle buses & Bike services

A broad network of bus and shuttle bus services will be provided to help IAU faculty and students travel within the campus and between campuses in a convenient, fast, and stress-free way. The IAU buses and shuttles enable everyone to park either on the university campus or select one of the specified locations closer to their residential neighborhoods and then use university transportation throughout their day.



IAU SHUTTLE

IAU BIKE

IAU SHUTTLE

3. IAU BUS SERVICE (To reduce private vehicle's carbon emissions)

The IAU provides nine lines of the bus to all its employees and students. These buses connect IAU's six campuses and three major gathering points. Once they arrive at the bus terminal on each campus, students and employees can ride the shuttle bus to their destinations. The service will be free of cost with a valid ID card issued by IAU.



Fleets of Shuttles at IAU

within the campuses. Such carts aid IAU to save energy and protect the environment. They also help IAU to achieve Zero emissions and Zero pollution. Further, this kind of service saves energy costs, has no noise, and a low failure rate.

Additional evidence link (i.e., for videos, more images, or other files that are not included in this file)

- <https://www.youtube.com/watch?v=eBmbc577Cv4>
- https://twitter.com/UOD_EDU_SA/status/1443889138315431936/photo/1
- <https://saudigazette.com.sa/article/611596>

6. Program to Limit carbon reduction

There are an ample number of programs that the university has proposed and adopted to limit or reduce the parking area on Campus. IAU is in a position to reduce dependency on cars on Campus. The university has to provide an easy, green, and accessible pedestrian system along with E-scooters or E-Bikes and a green transport system, including carpool and taxi booking via the university website.

1. Shuttle/bus campus inside campus

To reduce the number of private vehicles and their movement on the campus, IAU has launched various shuttle services for the students and staff. It has its fleet of buses besides contracts with other transport companies. Also, it has about 419 cars for its staff to move around its six campuses.

The university has 21, 30-seater shuttles with a carrying capacity of 630 passengers. It has contracted with Abu Aiban transportation company, which provides various buses transporting the students and staff from inside and outside the IAU campus. Abu Aiban runs about 133 buses.

There is no bus service served by the local buses to the university. The university shuttle services run from 6 AM to 6 PM g at various stops in the university.

Thus, it is an initiative to reduce the use of cars to save energy and fuel.

2. E-Scooter also launched to reduce the parking area in the campus

The Deanship of Community Service and Sustainable Development commissioned this initiative, which is formed as a part of utilizing clean energy within the university campus and making available its health benefits to the members of the campus community, including reducing the parking space.

It is the pilot phase of the smart mobility service to achieve the Kingdom's Vision 2030 towards providing new opportunities for transportation. "This initiative is executed through generating clean energy within the university campus by bicycles and e-scooters with the WAYZ application, which will facilitate for its users the rapid mobility feature at the university through an electronic mobile application." The Novel experiment is based on using clean energy for mobility inside the university campus.

IAU launched the initiative of 'Green University without Carbon,' under which these scooters, which are charged and operated with solar energy, will be used. It is a service available to all educational and administrative staffers of the university and to male and female students.

This initiative will facilitate their freedom of movement without cars, and the initiative received much encouragement.

Moreover, demand," she said while noting that safe corridors have been provided inside the university campus.

It is one of our priorities to ensure the safety of the beneficiaries of this service, and it will be included in the first stage inside the university campus until the infrastructure and private roads are provided at the university for this type of initiative that is reflected in reducing the proportion of carbon.

- <https://www.youtube.com/watch?v=eBmbc577Cv4>
- https://twitter.com/UOD_EDU_SA/status/1443889138315431936/photo/1
- <https://saudigazette.com.sa/article/611596>

7. Pedestrian paths (To control/limit commuting inside campus in vehicles to reduce carbon emissions)



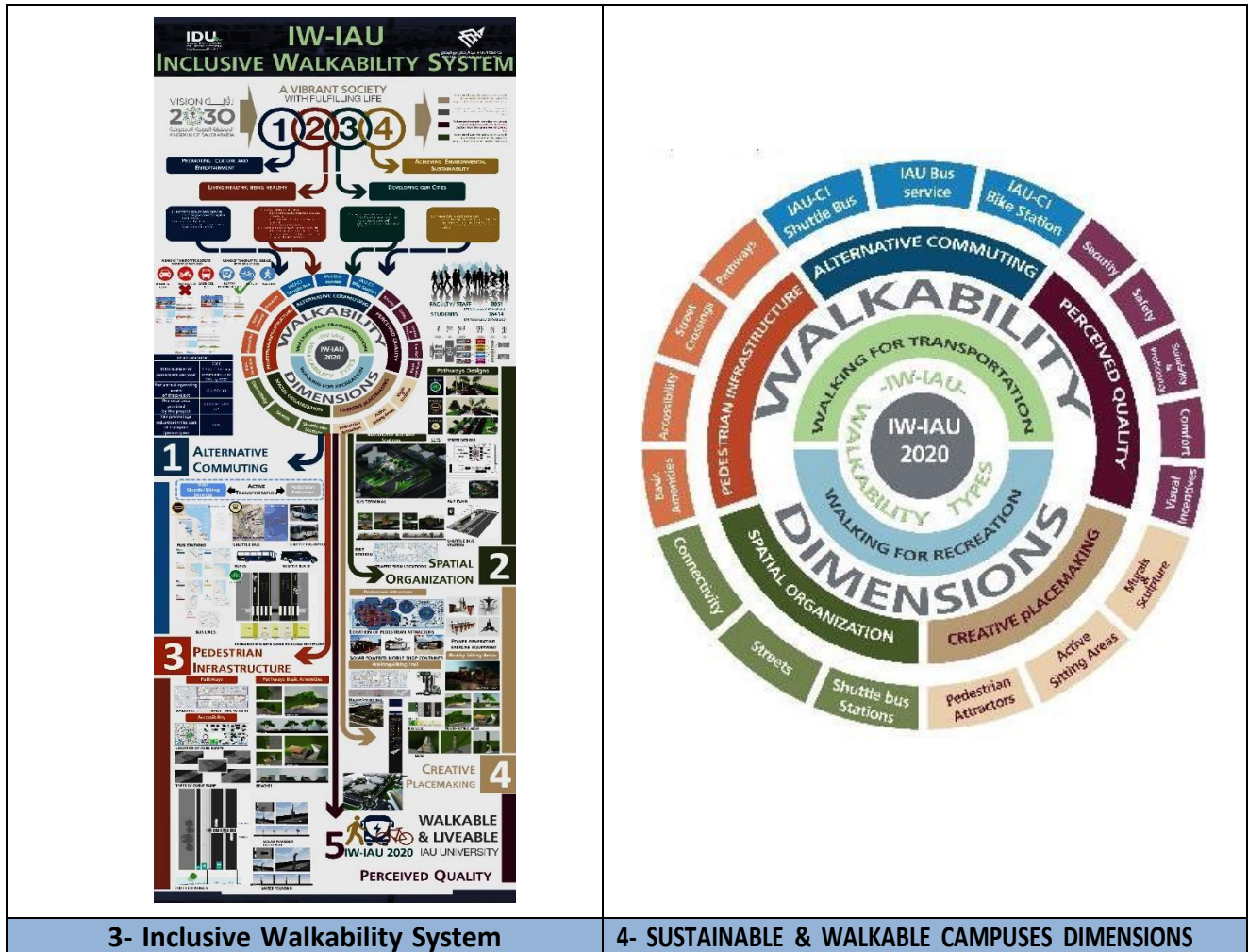
Pedestrian paths and Ramps provided for Disabled people



1- Pedestrian path



2- Solar Street lamp for pedestrian in night



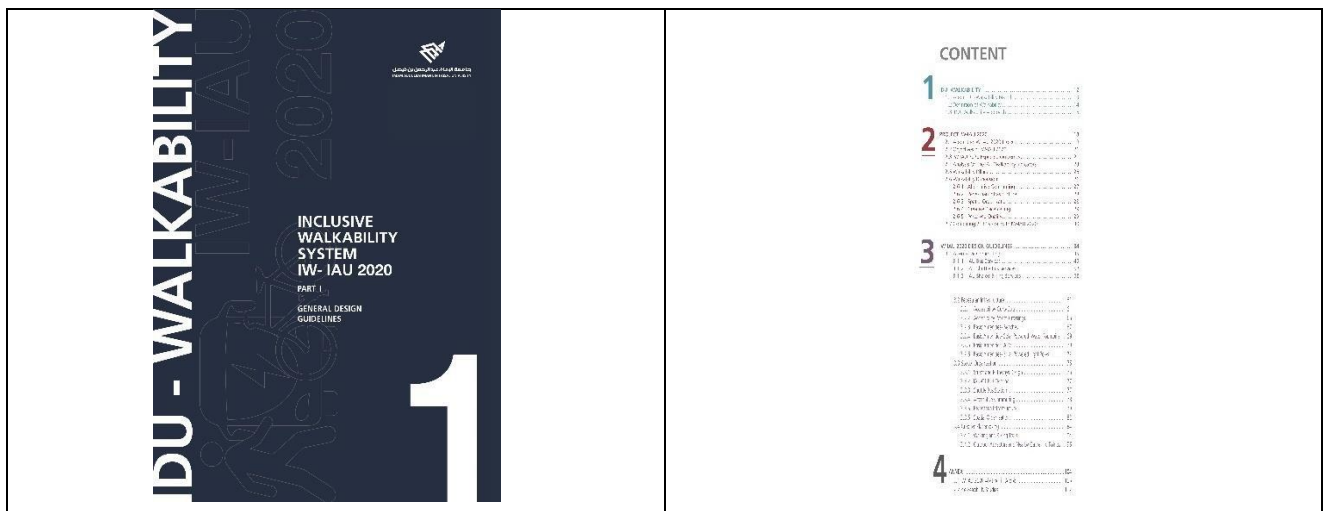
Description:

1. Zebra crossing is painted clearly for vehicles to watch before crossing, separator is made between road for vehicle and pedestrian path. Ramps and guiding blocks which have suitable design for pedestrian having physical disabilities.
2. Street lamp for pedestrian in night. Mostly, streetlamps use solar streetlights.
3. Sustainable and Walkable Campuses
4. The Inclusive Walkability (IW) System of the IAU University- IW-IAU 2020
The Inclusive Walkability System of the IAU university- IW-IAU 2020 is designed by the Inclusive Design Unit-Walkability Branch. It aims to transform university campus settings into an enabler, safer, more convenient, and enjoyable environment for walking, cycling, and other outdoor activities. The proposal thus aims to determine pedestrian environment determinants associated with active and leisure

transportation and, therefore, to direct the existing assets to improve walking and cycling and integrate them into an inclusive system for walkability adapted to the Imam Abdulrahman Bin Faisal University.

The IW-IAU 2020 project aims to achieve the Saudi 2030 Vision of transforming the IAU community into a vibrant society with a fulfilling life. Four principles were taken into consideration and interpreted via the IAU walkability dimensions and practices: Living healthy, being healthy; Developing our cities; Achieving environmental sustainability, Promoting culture and entertainment.

The fully detailed project was approved and published in 2018. Since then, many of its components are currently implemented either entirely or as pilot projects.



Once the project's dimensions and features are fully implemented, the university campuses' settings and services will be transferred into a living laboratory for experiential learning, demonstrating progressive applied Studies in universal and sustainable operations within a lively and engaged community. The project is part of the IDU strategic schemes to enable the IAU to become a regional and global leader in inclusive and sustainable design interventions for other universities and organizations in the kingdom and the region to follow.

Objectives:

1. Decreasing congestion on roads to university campuses and within campuses.
2. Allowing public transport system for long-distance trips;
3. Inciting walking (the activity) and cycling as the preferred choice for shorter trips.
4. Improving walkability on campuses, i.e., the quality of walking conditions, including safety,

comfort, and convenience.

5. Empowering career and life perspectives for students and new graduates.
6. Creating a greener urban environment.

4. SUSTAINABLE AND WALKABLE CAMPUSES DIMENSIONS:

The IW-IAU strategy provides five walkability dimensions that are claimed to affect the university's level of mobility positively:

- (1) Alternative Green Commuting,
- (2) Pedestrian Infrastructure,
- (3) Spatial Organization,
- (4) Creative Placemaking, and
- (5) Perceived Qualities.

5. Pedestrian Pathways

As it is depicted in the maps of East & West Campuses the pedestrian pathways are marked with dull peach color.

