

# World Lung Cancer Day



جامعة الإمام عبد الرحمن بن فيصل  
IMAM ABDULRAHMAN BIN FAISAL UNIVERSITY

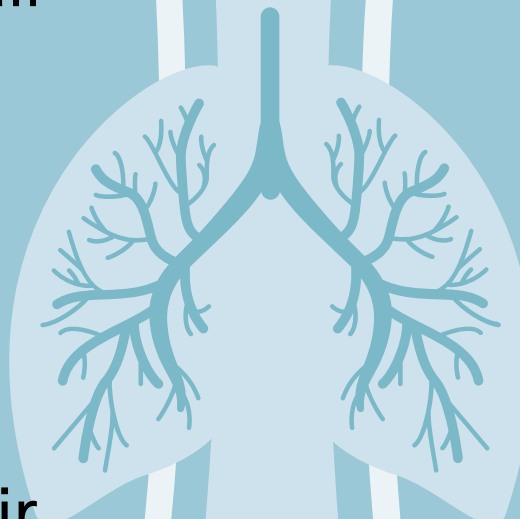
مستشفى الملك فهد الجامعي  
King Fahad Hospital The University

## Risk factors causing lung cancer

- Smoking is often the main cause.
- Passive smoking resulting from breathing air with smokers.
- Exposure to radon gas through its high concentration in the home and its surroundings.
- Previous radiotherapy to the lungs.
- Personal or family history of lung cancer. air pollution.

## prevention of lung cancer

- Stay away from smoking.
- Quit smoking.
- Avoid passive smoking.
- Conducting tests to detect radon gas in the home and its surroundings.
- Avoid exposure to carcinogenic substances in the work environment.
- Maintain regular exercise.
- Eat a diet rich in fruits and vegetables.



[For more information Scan the response code](#)

التوعية الصحية  
Health Awareness



World lung cancer day  
August



1

# How is lung cancer diagnosed?



جامعة الإمام عبد الرحمن بن فيصل  
IMAM ABDULRAHMAN BIN FAISAL UNIVERSITY

مستشفى الملك فهد الجامعي  
King Fahad Hospital The University



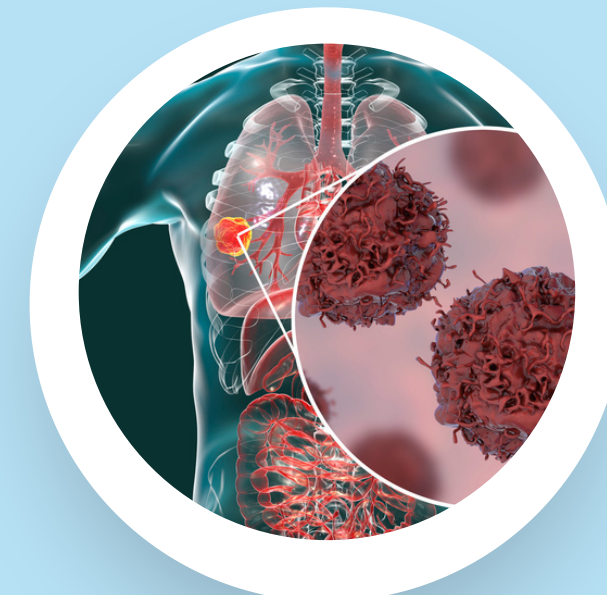
Sputum  
examination



X-ray is usually the first  
examination the doctor performs.



CT scan to create a detailed  
cross-sectional image



Taking a biopsy  
of lung cells.

For more  
information Scan the  
response code







جامعة الإمام عبد الرحمن بن فيصل  
IMAM ABDULRAHMAN BIN FAISAL UNIVERSITY

مستشفى الملك فهد الجامعي  
King Fahad Hospital The University



WORLD LUNG CANCER DAY

LUNG CANCER IN THE EARLY STAGES USUALLY DOES NOT CAUSE SIGNS OR SYMPTOMS.IT MAY INCLUDE:

## SYMPTOMS

PERSISTENT COUGH

PALENESS, EMACIATION,  
AND WEIGHT LOSS

HOARSENESS

SHORTNESS OF BREATH

BLOODY COUGH

For more  
information Scan the  
response code



التوعية الصحية  
Health Awareness

